

**WEST**

**EAST**

**NOTES**

1. THE INFERRED GEOTECHNICAL SECTIONS ARE AN IDEALISATION OF GEOLOGICAL INTERPOLATION AND EXTRAPOLATION OF DISCRETE BORHOLE AND SURFACE MAPPING DATA. THE INTERPRETATION SHOWN DOES NOT NECESSARILY IMPLY THE ACTUAL CONTACT BETWEEN THE GEOLOGICAL UNITS.
2. THE COMPONENT OF REGIONAL DIP TO THE WEST ON THIS TYPE-SECTION IS DERIVED FROM STRUCTURAL CONTOUR DATA.
3. THE BALD HILL CLAYSTONE DEPICTED HERE INCLUDES UNDIFFERENTIATED NEWPORT FORMATION AND THE GARE TONSTEIN (AT TOP).

**FIGURE IIS-2B: ILLAWARRA ESCARPMENT**  
**ILLUSTRATIVE-SECTION DEPICTING LANDSLIDE SUSCEPTIBILITY: BULLI TOPS TO AUSTINMER**  
 (looking north-east, towards 047°GN)

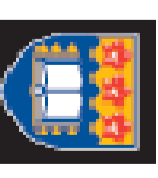
**FIGURE IIS-2B**



© Australian Geomechanics Society



CLIENTS | PEOPLE | PERFORMANCE  
**GHD GEOTECHNICS**



University of Wollongong

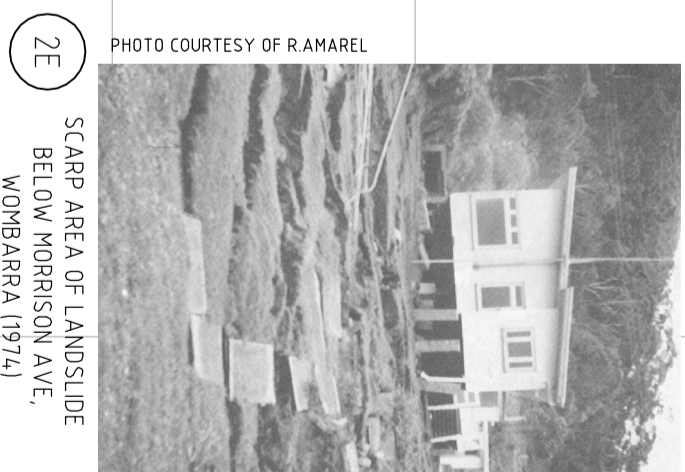


PHOTO COURTESY OF R. AMAREL  
 SCARP AREA OF LANDSLIDE BELOW MORRISON AVE, WOMBARRA (1974)